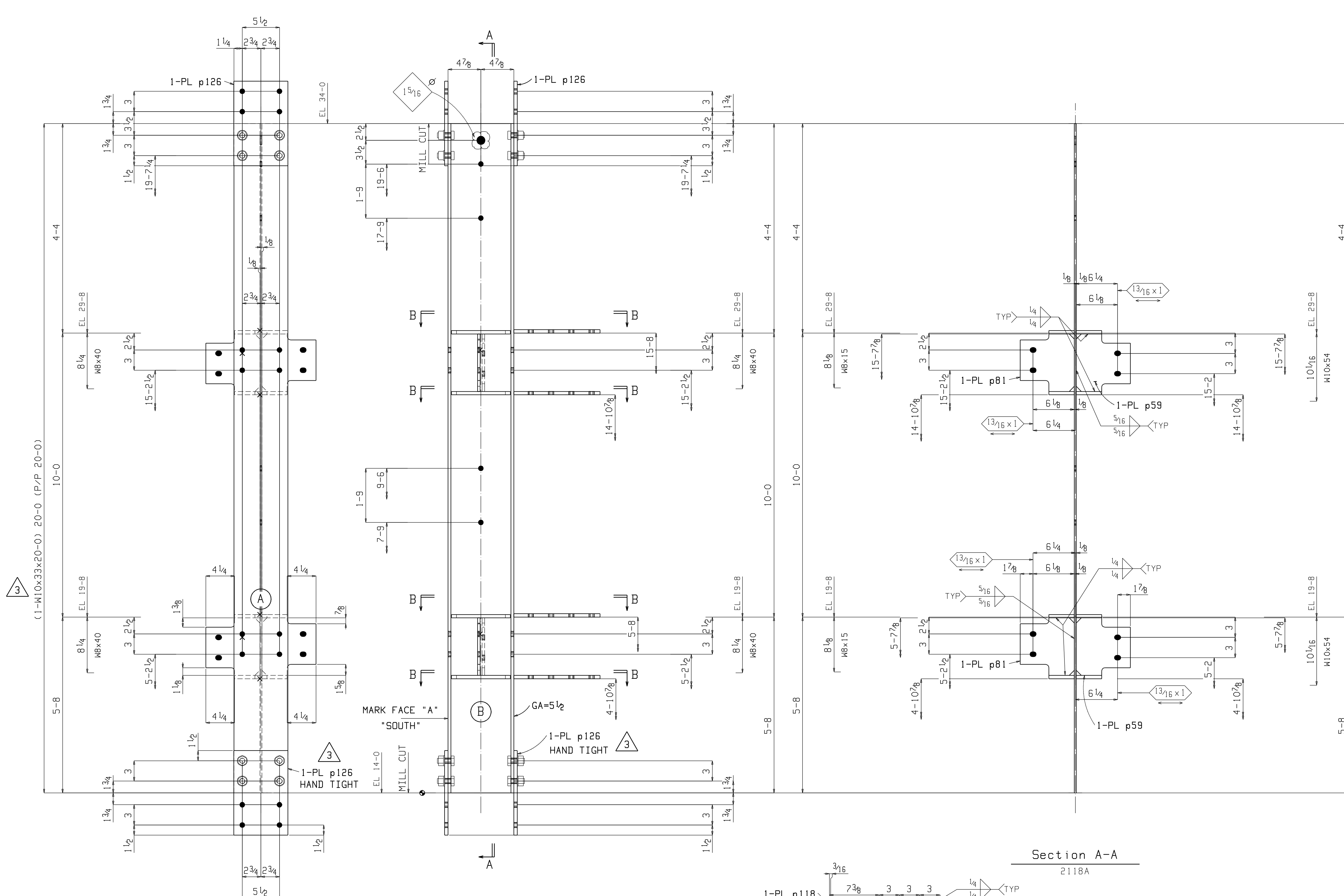
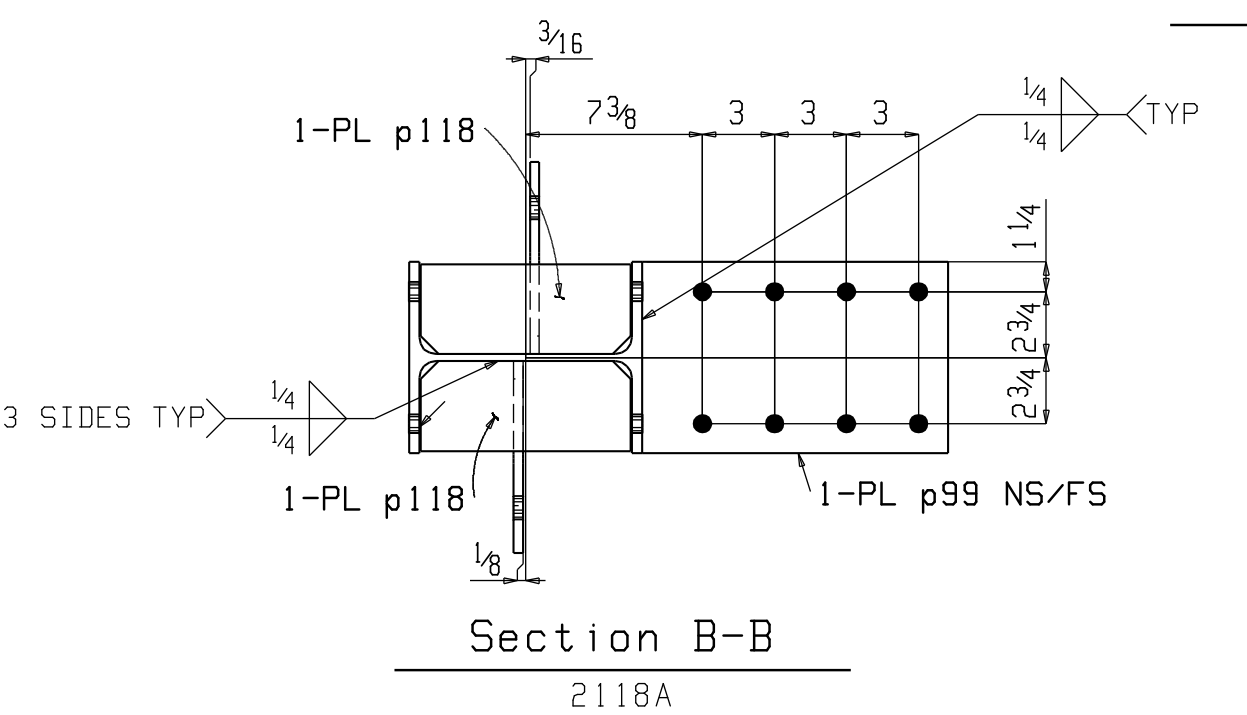


BILL OF MATERIAL

Quantity	Unit	Description	Mark	Length	Weight	Weight	Remarks	Minor	Steel
Unit	Total				Unit	Total		Mark	Grade
1	ONE COLUMN	2118A			851	851			
1	1	M10x33		20	0	660	660	M2E	2118A A392
4	4	PL 1/2x8		1	0 1/2	14	57	p126	A36
4	4	PL 1/2x7 1/2		1	0 1/2	14	58	p99	A36
8	8	PL 1/2x3 1/4		0	8 1/4	5	37	p118	A36
2	2	PL 3/8x8		0	8 1/2	7	14	p59	A36
2	2	PL 3/8x8		0	8 1/2	7	14	p81	A36
16	16	3/4 Dia A325N		0	2	1	10	1HD WASH	



ONE COLUMN 2118A  
 W 9 3/4 x 5 1/16  
 F 7 15/16 x 7 1/16  
 AT GRID: F4 & 5  
 SHOP BOLTS: 16-3/4x2 A325N



1. ACCUMULATIVE DIMENSIONS ARE TAKEN FROM THE  $\odot$  LINE
2. ALL GAS RE-ENTRANT CUTS WILL HAVE A RADIUS OF  $1/2$ " U.N.O.
3. ALL CONN. MAT. A36 (U.N.), PIPE A53, TUBE A500 Gr.B
4. TOLERANCES-AISC UNLESS NOTED
5. DEBURRING OF HOLES IS REQUIRED IF BURR EXCEEDS  $1/16$ "
6.  $\otimes$  INDICATES SIDE OF PLATE SHOP IS TO PAINT A SPOT ON FOR ERECTION PURPOSES.

**ORANGE COUNTY IRONWORKS LLC**  
 27 STONE CASTLE ROAD ROCK TAVERN N.Y. 12575  
 845-564-8421

PRINT RECORD			STRUCTURE 50 NORTH 1st STREET	
QUANTITY	DATE	COPY	LOCATION	BROOKLYN, NY
			CONTRACTOR WTC CONSTRUCTION	
OWNER				
Conns Unless Noted				
Holes 13/16 Unless Noted				
Paint NO PAINT				
ENG. OR ARCH'T	ALAN PATRICK BRUTON	PROJ NO.	2118	
REV	DATE	DESCRIPTION	PROJ NO.	SHEET NO.
1	03-12-08	RELEASED FOR APPROVAL	8011	2118
2	05-01-08	REVISED & RELEASED FOR FAB		
3	05-13-08	REV'D COL SIZE & SPLICE CONN		
4				