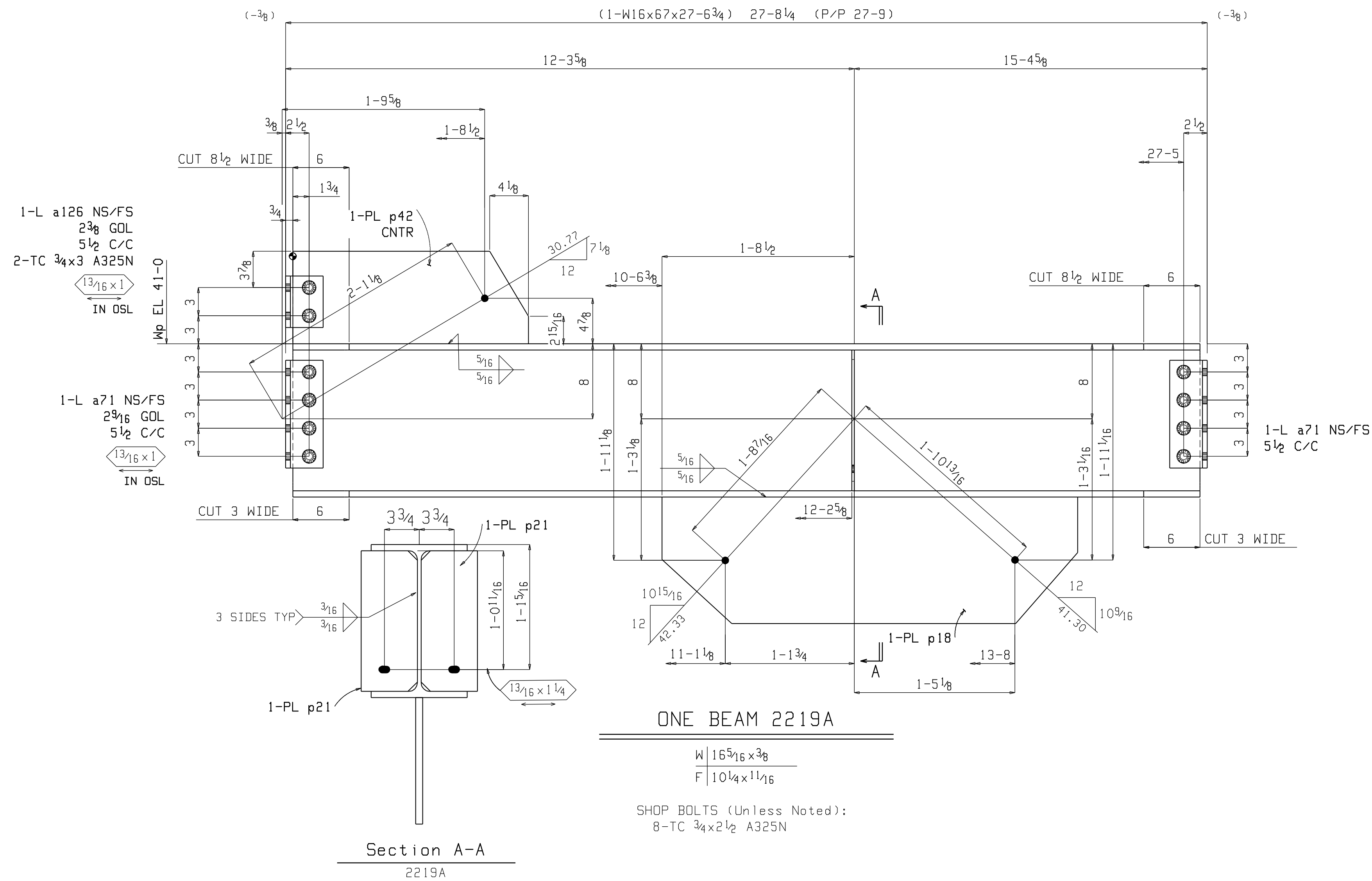


BILL OF MATERIAL

Quantity	Unit	Description	Piece Mark	Length	Weight	Weight	Remarks	Minor Mark	Steel Grade
ONE BEAM			2219A		2107	2107			
1		1 W16x67		27	64	1847		2219A	A992
4		4 L4x4x1/2		0	11 1/2	12		a71	A36
2		2 L4x4x1/2		0	5 1/2	6		a126	A36
1		1 PL 3/4x13 1/2		3	8 3/8	127		p18	A36
1		1 PL 3/4x9 1/8		2	1 1/8	53		p42	A36
2		2 PL 1/4x6		1	3	6		p21	A36
2		2 TC 3/4 Dia A325N		0	3	1			
8		8 TC 3/4 Dia A325N		0	2 1/2	1			



1. ACCUMULATIVE DIMENSIONS ARE TAKEN FROM THE ● LINE
2. ALL GAS RE-ENTRANT CUTS WILL HAVE A RADIUS OF 1/2" U.N.O.
3. ALL CONN. MAT. A36 (U.N.), PIPE A53, TUBE A500 Gr.B
4. TOLERANCES-AISC UNLESS NOTED
5. DEBURRING OF HOLES IS REQUIRED IF BURR EXCEEDS 1/16"
6. ☒ INDICATES SIDE OF PLATE SHOP IS TO PAINT A SPOT ON FOR ERECTION PURPOSES.

ORANGE COUNTY IRONWORKS LLC

27 STONE CASTLE ROAD ROCK TAVERN N.Y. 12575
845-564-8421

PRINT RECORD			STRUCTURE CRYSTAL RUN HEALTHCARE				
QUANTITY	DATE	COPY	LOCATION	WALLKILL, NY	CONTRACTOR	BBL CONSTRUCTION SERVICES	
			OWNER	BBL MEDICAL FACILITIES			
Conns			ENG. OR ARCH'T HCP ARCHITECTS				
Holes	13/16	Unless Noted	REV	DATE	DESCRIPTION	PROJ NO.	SHEET NO.
Paint	ND PAINT UND	Unless Noted	1	05-08-08	RELEASED FOR APPROVAL	8037	2219
Made	LRH	Date 05-07-08	2	07-08-08	RELEASED FOR FABRICATION		
Chk'd	JPT	Date 05-06-08	3	07-16-08	RE-RELEASED FOR FAB		
			4				