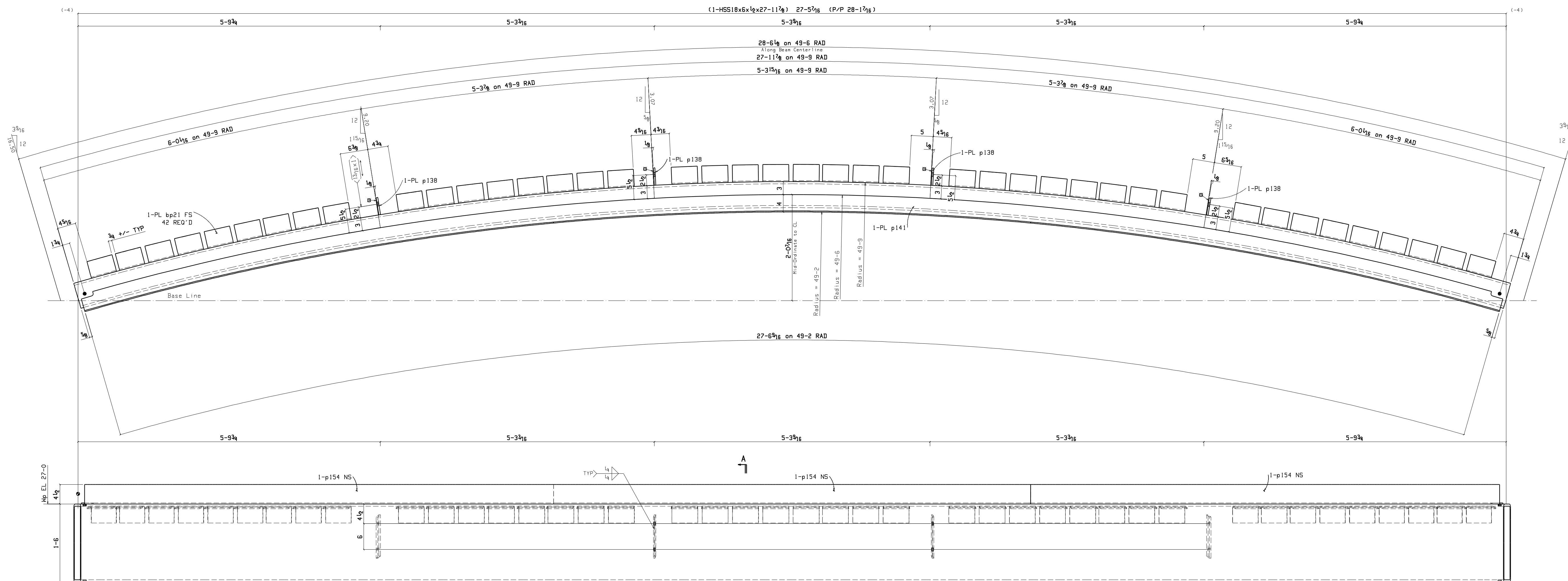


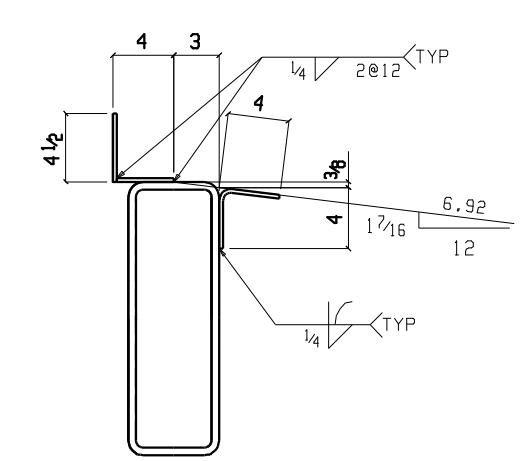
**BILL OF MATERIAL**

Quantity	Quantity		Piece	Height	Height	Minor	Steel
Unit	Total	Description	Mark	Length	Unit	Total	Remarks
		ONE BEAM	2257A		3004	3004	
1	1	HSS18x6x1/2x27-11 3/8		27	11 3/8	2129	ROLLED 2257A A500B
4	4	PL 3/8x4		0	10	4	p138 A36
1	1	PL 1/2x26 3/4		27	3 1/2	621	p141 A36
42	42	BPL 1/2x2 3/8		0	6	3	BENT bp21 A36
3	3	PL 1/2x4 1/2		9	2 1/4	35	105 ROLLED p154 A36
		FIELD BOLTS					
	2	3/4 Dia A307		1	7 1/2		



**ONE BEAM 2257A**

FIELD BOLTS:  
2-3/4x1-7/8 A307



**Section A-A**  
2257A

1. ACCUMULATIVE DIMENSIONS ARE TAKEN FROM THE  $\odot$  LINE
2. ALL GAS RE-ENTRANT CUTS WILL HAVE A RADIUS OF  $1/2$ " U.N.O.
3. ALL CONN. MAT. A36 (U.N.), PIPE A53, TUBE A500 Gr.B
4. TOLERANCES-AISC UNLESS NOTED
5. DEBURRING OF HOLES IS REQUIRED IF BURR EXCEEDS  $1/16$ "
6.  $\otimes$  INDICATES SIDE OF PLATE SHOP IS TO PAINT A SPOT ON FOR ERECTION PURPOSES.
7. NO PAINT WITHIN 3" OF OPEN HOLES
8. SPLICE WELD, CONTINUOUS FLAT PLATE, BENT PLATE OR ANGLES WHERE NEEDED USING SEAL WELD PROCEDURE

**ORANGE COUNTY IRONWORKS LLC**

36 MAYBROOK ROAD MONTGOMERY N.Y. 12549  
845-769-3000

PRINT RECORD			STRUCTURE CONEY ISLAND STEEPLCHASE	
QUANTITY	DATE	COPY	LOCATION	
			BROOKLYN, NEW YORK	
			CONTRACTOR HUNTER ROBERTS CONSTRUCTION GROUP	
			OWNER CITY OF NEW YORK PARKS & RECREATION	

REV	DATE	DESCRIPTION	PROJ. NO.	SHEET NO.
1	01-12-12	RELEASED FOR APPROVAL	11101	2257
2	04-05-12	RELEASED FOR FABRICATION		
3				
4				