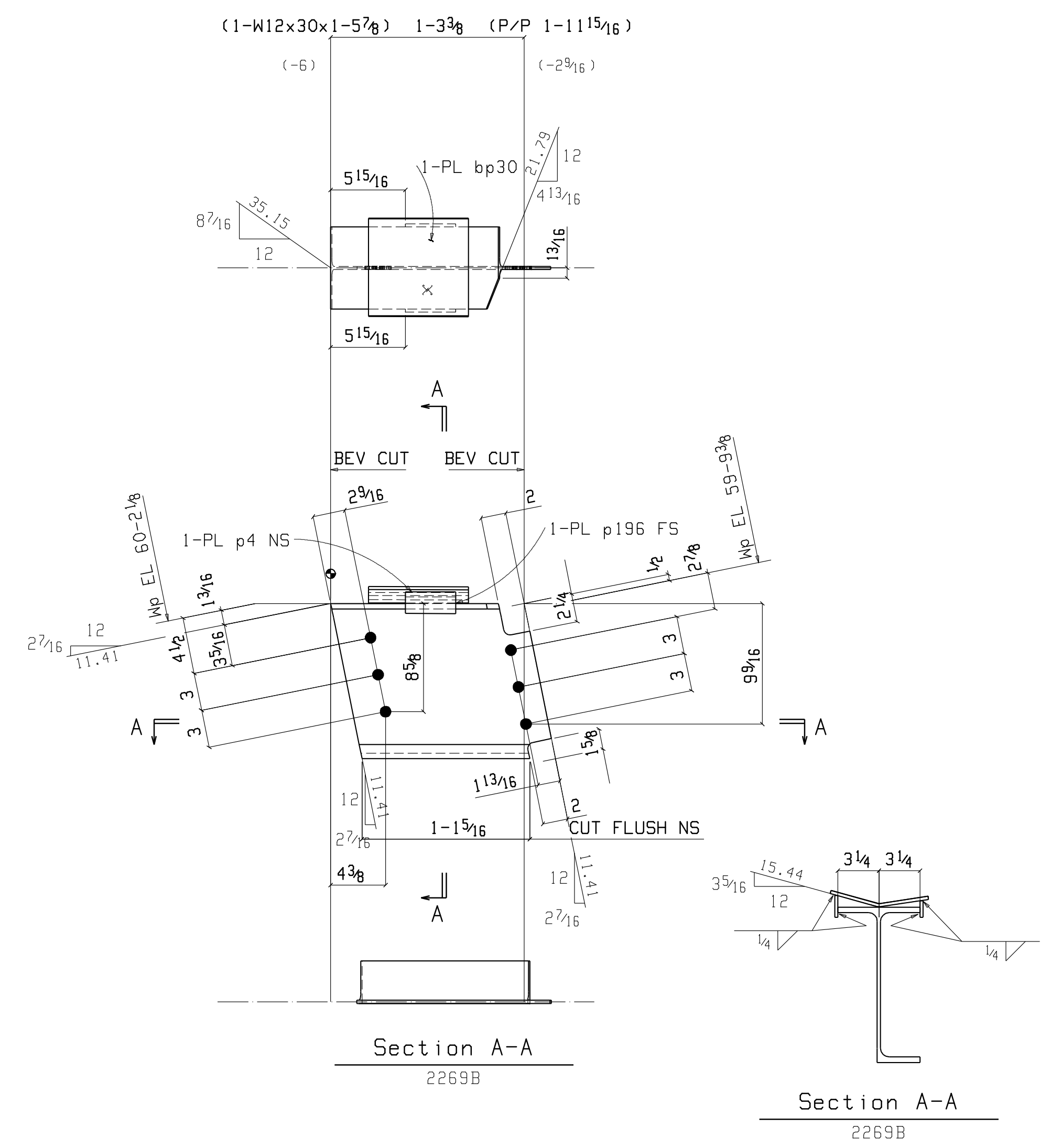


ONE BEAM 2269A
 W 12 1/2 x 4
 F 6 1/2 x 3/8
 K 1 1/2 x 1 3/16
 FIELD BOLTS:
 5-TC 7/8 x 2 A325N
 LEFT END USER INPUT LOADS:
 SHEAR: 9.2 KIPS



ONE BEAM 2269B
 W 12 5/16 x 1/4
 F 6 1/2 x 7/16
 K 1 1/8 x 1 3/16
 FIELD BOLTS:
 3-TC 7/8 x 2 A325N
 LEFT END USER INPUT LOADS:
 SHEAR: 4.0 KIPS

BILL OF MATERIAL									
Quantity	Quantity		Piece	Weight	Weight	Minor	Steel		
Unit	Total	Description	Mark	Length	Unit	Total	Remarks	Mark	Grade
		ONE BEAM	2269A		914	914			
1	1	W12x26		24	10 3/8	646	BCE	2269A	A992
1	1	L8x4x1/2		0	11 3/8	19		a140	A36
1	1	L8x4x1/2		0	11 3/8	19		a210	A36
2	2	PL 3/8 x 6		0	7	5	10	p203	A36
2	2	PL 3/8 x 6		0	6 1/2	4	8	p199	A36
1	1	PL 3/8 x 5		0	6	3	3	p148	A36
2	2	PL 3/8 x 3		0	8 1/2	3	5	p215	A36
1	1	BPL 1/4 x 7 3/4		23	10	157	157	bp24	A36
1	1	PL 1/4 x 2 1/8		8	3	18	18	p213	A36
1	1	PL 1/4 x 2 1/8		7	6	17	17	p214	A36
1	1	PL 1/4 x 2 1/8		4	3	9	9	p212	A36
1	1	PL 1/4 x 2 1/8		1	1	2	2	p211	A36
		FIELD BOLTS							
		5 TC 7/8 Dia A325N		0	2				1HD WASH

BILL OF MATERIAL									
Quantity	Quantity		Piece	Weight	Weight	Minor	Steel		
Unit	Total	Description	Mark	Length	Unit	Total	Remarks	Mark	Grade
		ONE BEAM	2269B		50	50			
1	1	W12x30		1	5 1/8	45	45	BCE	2269B
1	1	BPL 1/4 x 7 1/2		0	7 1/2	4	4	BENT	bp30
1	1	PL 1/4 x 1 1/2		0	4	0	0		p4
1	1	PL 1/4 x 1 1/2		0	4	0	0		p196
		FIELD BOLTS							
		3 TC 7/8 Dia A325N		0	2				1HD WASH

1. ACCUMULATIVE DIMENSIONS ARE TAKEN FROM THE Ⓞ LINE
2. ALL GAS RE-ENTRANT CUTS WILL HAVE A RADIUS OF 1/2" U.N.O.
3. ALL CONN. MAT. A36 (U.N.), PIPE A53, TUBE A500 Gr.B
4. TOLERANCES-AISC UNLESS NOTED
5. DEBURRING OF HOLES IS REQUIRED IF BURR EXCEEDS 1/16"
6. X INDICATES SIDE OF PLATE SHOP IS TO PAINT A SPOT ON FOR ERECTION PURPOSES.
7. NO PAINT WITHIN 3" OF OPEN HOLES
8. SPLICE WELD, FLAT PLATE, BENT PLATE OR ANGLES WHERE NEEDED

ORANGE COUNTY IRONWORKS LLC
 27 STONE CASTLE ROAD ROCK TAVERN N.Y. 12575
 845-564-8421

PRINT RECORD				OWNER CARLISLE 839 LLC			
QUANTITY	DATE	COPY	STRUCTURE	839 6TH AVE.	PROJ NO.	SHEET NO.	
			LOCATION	NEW YORK, NEW YORK			
			CONTRACTOR	M.D. CARLISLE CONSTRUCTION CORP.			
Conns	A36	Unless Noted	ENG. OR ARCHT	PERKINS EASTMAN			
Holes	1 3/16	Unless Noted	REV	DATE	DESCRIPTION		
Surf.	Prep	SSP-2	1	11-12-09	RELEASED FOR APPROVAL		
D.F.T.			2	01-16-10	RELEASED FOR FABRICATION		
Paint	NO PAINT		3	2-6-10	RELEASED FOR FABRICATION	9062	2269
Made	JL	Date 11-06-09	4	03-29-10	REVISED DIMS FOR BEAM 2269A		
Chk'd	AC	Date 11-11-09					