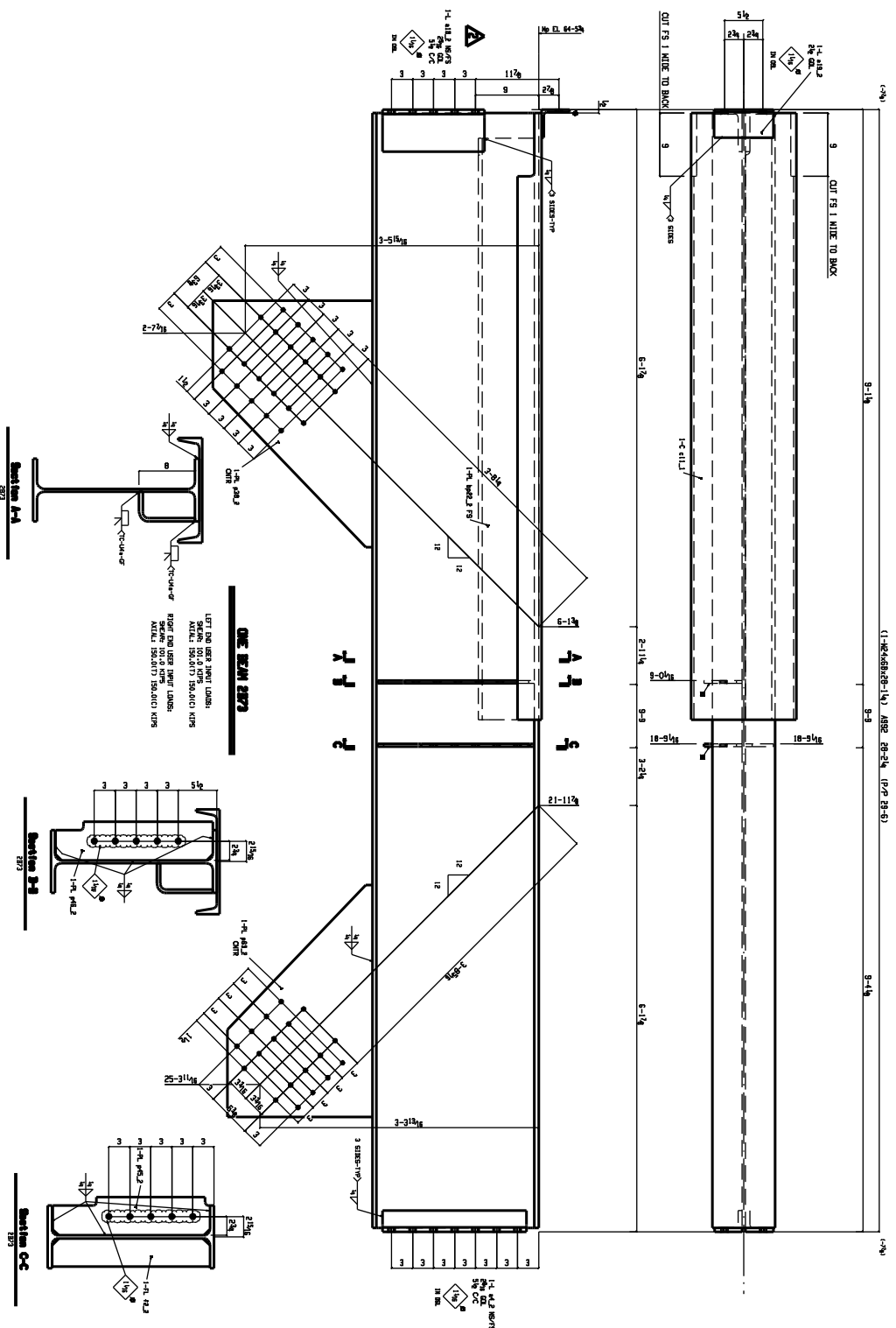


BILL OF MATERIAL

QTY	PC	DESCRIPTION	LENGTH	WEIGHT UNIT	WEIGHT TOTAL	STEEL GRADE	REMARKS
TOTAL	MARK	DESCRIPTION					
ONE	2B73	BEAM		2761	2761		
1	2B73	W24x68	1 1/4	1911	1911	A992	
2	a18_2	L6x4x5/8	1 2 1/2	24	48	A36	
1	a19_2	L4x4x3/8	8 1/2	7	7	A36	
2	a4_2	L4x3x5/8	8 1/2	23	46	A36	
1	c11_1	C15x33.9	6 5/8	324	324	A36	
1	p38_2	PL 1/2x22x8	11 1/4	114	114	A36	
1	p63_2	PL 1/2x20x4	9 1/8	97	97	A36	
1	bp22_2	BPL 1/2x11 1/4	3	177	177	A36	BENT
1	p45_2	PL 3/8x5 1/2	10 7/16	13	13	A36	
1	p46_2	PL 3/8x5 1/2	10 7/16	13	13	A36	
1	f2_2	FL 3/8x4	10 9/16	10	10	A36	

NO PAINT



2	11-16-10	REVISED RHE CONN FOR FABRICATION		STEEL FABRICATOR BARONE STEEL FABRICATORS 271 40TH STREET BROOKLYN, NY 11232
1	10-26-10	FOR APPROVAL		
0	09-29-10			
REV.# DATE		DESCRIPTION BY		
HOLE:		13/16" DIA. UNO		
BOLTS:		3/4" DIA. A325SC UNO		
PAINT:		NO PAINT UNO		
MATERIAL:		SHAPES - STEEL A992 GR.50 - UNO. TUBES - STEEL A500 GR. B - UNO. CHANNELS, ANGLES AND PLATES - A36 GR. 36.		
PROJECT #1178		CITY POINT		
ENGINEER		DESIGNER		
ARCHITECT		GREENBERGFARROW ARCHITECTS		
DETAILER		KENNEBEC VALLEY DETAILERS, LLC PHONE: (207)622-2255 FAX: (207)512-2327		
DESIGNED BY		JL		
CHECKED BY		AC		
DATE		05-26-09		
DRAWING NO		2B73		